

# MONTHLY MEMBERSHIP PROGRESS REPORT

LOCATION INDIA

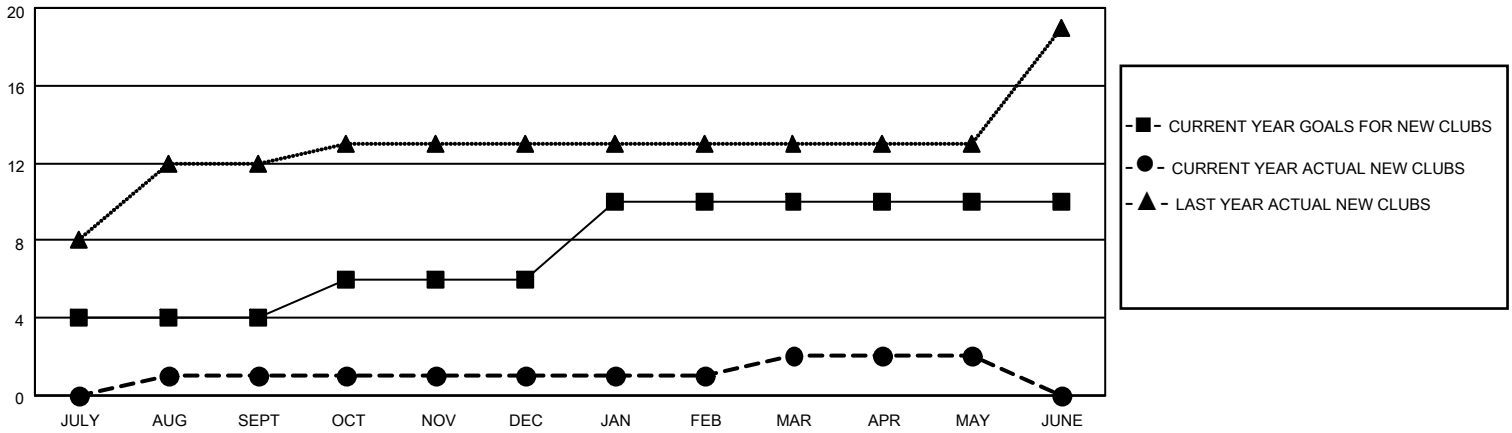
District 324 B

Results as of: 5/31/2023

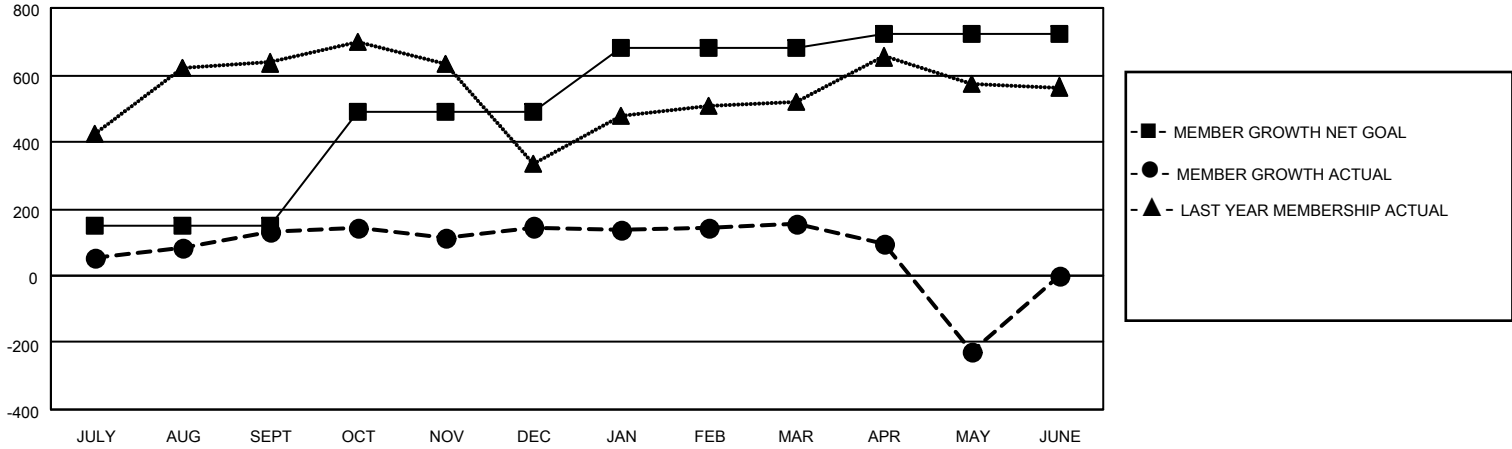
Clubs			
RESULTS FOR 2022-2023			
QUARTER	NEW CLUB GOAL	NEW CLUBS	DROPPED CLUBS
JULY/AUG/SEPT	4	1	1
OCT/NOV/DEC	2	0	4
JAN/FEB/MAR	4	1	1
APR/MAY/JUNE	0	0	0

Members			
RESULTS FOR 2022-2023			
QUARTER	MEMBER GROWTH NET GOAL	MEMBER GROWTH ACTUAL	DROPPED MEMBERS ACTUAL (including transfers)
JULY/AUG/SEPT	150	235	74
OCT/NOV/DEC	340	361	322
JAN/FEB/MAR	190	61	51
APR/MAY/JUNE	40	94	438

**GOALS AND ACTUAL NEW CLUBS CUMULATIVE**



**GOALS AND ACTUAL MEMBERS CUMULATIVE**



DROPPED CLUBS: 6	
<b>DROPPED MEMBERS</b>	
DECEASED	19
CLUB CANCELLED	118
OTHER	749
<b>TOTAL</b>	<b>886</b>

134 CLUBS OF 185 ADDED 1 OR MORE NEW MEMBERS

[CLICK HERE FOR CUMULATIVE MEMBERSHIP DATA](#)

<u>GENDER DISTRIBUTION</u>	
MALE	5,329 (77.52%)
FEMALE	1,541 (22.42%)
NON BINARY	0 (0.00%)
PREFER NOT TO ANSWER	4 (0.06%)
TOTAL FAMILY UNIT MEMBERS 4,245	
FAMILY MEMBERS PAYING HALF DUES 2,759	